



NESH MARKETING SDN BHD

(199301002028)

12, Jalan Puteri 4/2, Bandar Puteri, 47100 Puchong, Selangor, Malaysia.

Tel: 03-8060 3668

E-mail: info@nesh.com.my Website: www.nesh.com.my

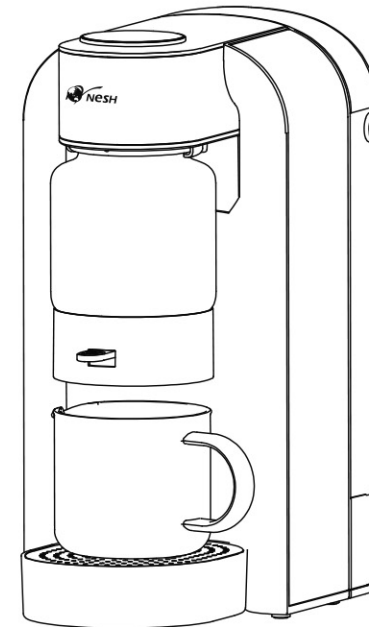
Facebook: NESH Malaysia Instagram: neshmalaysia



Instant Brewer

User Manual Model: EM3026

Please read this user manual carefully before usage. Kindly retain for future reference.



Contents

Dear NESH Valued Customer:

Thank you for choosing our product. Kindly read this user manual carefully for safe and effective use of the product. Please keep this manual at safe place for future reference. Remember to include this user manual should you send this product to your friend as a gift. We hope you like our product.

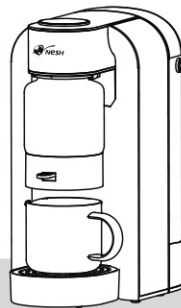
Product Overview

NESH Instant Brewer is a smart drinking water product that allows instant drinking, provides hot water instantly, eliminating the risk of reboiling water, ensuring both safety and health. It also offers multiple temperature options to suit different types of beverages, delivering an ideal brewing experience and level up your quality of life.

Features

- **Fast** : It takes only 3 to 5 seconds to produce hot water, and you can drink it immediately after it is turned on, without having to boil it in advance to keep it warm.
- **Energy Saving** : Heats only when needed. Adjusts based on how much water you use to avoid wasting energy. More efficient and eco-friendly.
- **Safety** : No contact with electrical parts. Instant hot water without reboiling, cleaner and safer to drink.
- **Smart Temp. Control** : Adjustable temperature settings meet different hot water needs.
- **Smart Water Dispensing** : Dispenses water according to varying needs and usage habits.

Product Specification01
Safety Precautions02
Product Structure03
Product Usage and Maintenance03
Troubleshooting07
Limited Warranty08
Terms & Conditions08



Disclaimer:

The contents of this user manual have been carefully checked. The company reserves the right to explain for any mistake and/or omission in print or misunderstanding of the contents. In addition, any technical improvement will be updated in the revised version without prior notice. With a view to constantly improving our products, we reserve the right to make any changes in their technical, program or aesthetic features connected with their technical evolution.

Product Specification

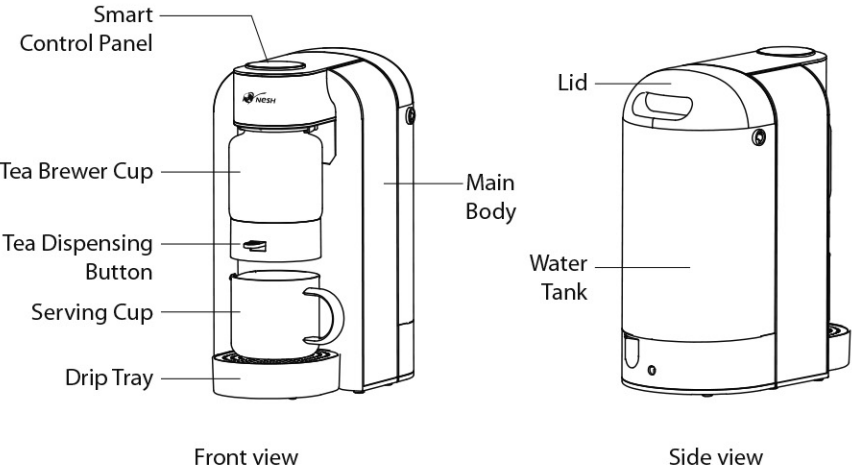
Model	: EM3026
Weight	: 2.5kg
Rated Voltage	: 220V-240V~ ; 50Hz/60Hz
Rated Power	: 2000W-2400W
Tank Capacity	: 2 Litres
Dimension	: 284 x 162 x 320mm

Safety Precautions

For your safety, follow the safety instructions in this manual to reduce the risk of accidents. Do not operate this product until you have read and understood the manual, as improper use may lead to injury or product malfunction.

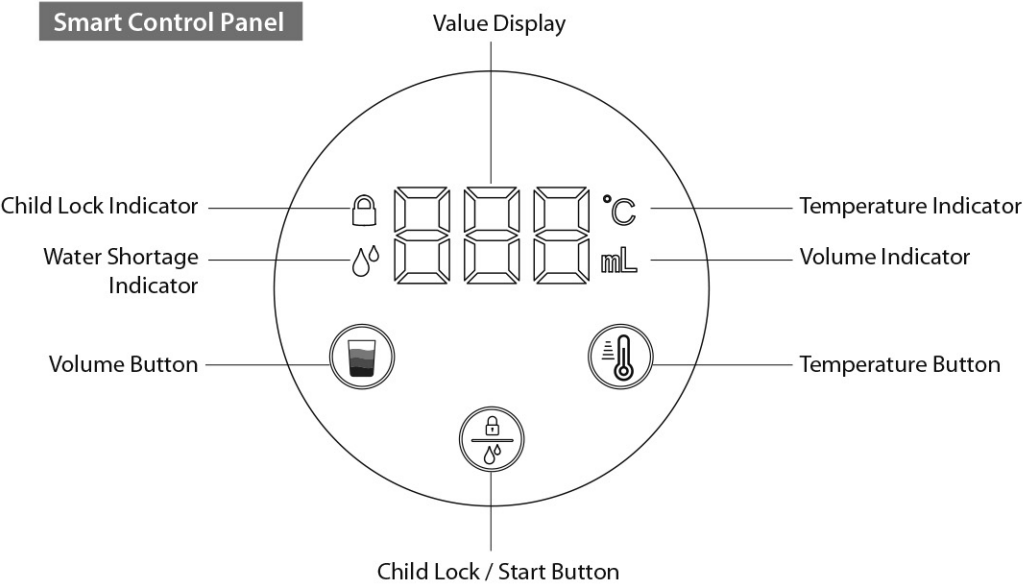
- Make sure the power socket is properly grounded and supports a rated current of more than 10A. If you feel a tingling sensation or a slight electric shock on the product during use, switch off the power immediately and contact a professional electrician to check the grounding of the socket.
- This product is not suitable for outdoor use or areas with water splashes. It must be installed indoors, in a cool and dry place, away from direct sunlight. Do not place flammable items near the product.
- Do not place foam, cardboard, or any other items under the product to prevent water buildup or electrical leakage.
- Do not drop, hit, or squeeze the product during transportation, installation, or use, to avoid damage.
- Always hold the plug when unplugging the power cord. Do not pull the cord directly. Do not use extension cords without proper safety measures, as this may cause fire or electric shock.
- Dry boiling is strictly prohibited for this product.
- Do not pull the power cord when moving this product, and do not wrap the power cord around the product during use.
- Do not place the product on a hot surface or use it in high-temperature environments.
- Do not touch the water outlet during use to avoid burns.
- Do not immerse the plug or power cord in water or any other liquid.
- Before use, ensure the power socket can support the required load to prevent overload. Please check whether the voltage and power match the product specification.
- Do not lift the water tank when the product is powered on.
- After removing the tea brewer cup, please adjust the height of water cup in time to prevent splashing of boiling water and causing injury.
- Place the product on a stable surface, out of children's reach. Do not place it on top of other electrical appliances.
- Unplug the power cord before cleaning or when the product is not in use.
- If the product will not be used for an extended period, unplug it and empty the water tank.
- If the product experiences water leakage or electrical faults, turn off the power immediately, unplug the product, and contact the NESH CARE team for assistance. Do not attempt to repair it yourself.
- Use only genuine parts or accessories.
- Use a soft, damp cloth to clean the product. Do not use gasoline or other organic solvents, as this may cause discoloration of the surface. Do not rinse the product with water or spray water directly on it.

Product Structure



Product Usage and Maintenance

Smart Control Panel



Product Usage and Maintenance

Button Operation



Child Lock Button

- Touch the Child Lock Button to unlock, and the Child Lock Indicator light will turn off.
- When the Child Lock is activated, the water dispensing function is disabled, but you can still adjust the temperature and volume.
- The product will automatically enter Child Lock mode 10 seconds after it stops operating. The Child Lock Indicator will turn on.



Temperature Button

- Touch the Temperature Button to select your desired water temperature. The screen will display the selected temperature.
- This product offers 5 temperature settings: 25°C, 45°C, 75°C, 85°C, 95°C.



Volume Button

- Touch the Volume Button to select your desired amount of water. The screen will display the selected volume.
- This product offers 3 volume levels: 150ml, 230ml, and 300ml.



Start Button

- Both the Start and Child Lock functions share the same button. When the Child Lock is activated, touch the button once to unlock, then touch again to start dispensing.
- During water dispensing, you may touch any button to stop the water flow at any time.

Usage Precautions



Warning

- Only the water in this product's water tank can be heated. Make sure the water in the tank is at room temperature. Water that is too hot or too cold may cause product malfunction.
- This product must not be used with other liquids except normal drinking water.
- The power plug of this product must be properly grounded, and the power socket must support a current of at least 10A. Failure to meet these requirements may result in overheating of the power cord, leading to fire hazards or other dangers.
- Children and users with disabilities must use this product under supervision.
- In the event of a fire accident, immediately cut off the power supply of this product and take appropriate fire extinguishing measures.
- When cleaning the product, do not immerse it in water.

Product Usage and Maintenance



Instructions

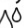
- The protective film on the drip tray serves a protective function, please remove it before use.
- For first-time use, dispense one cup of 25°C water to allow the product to adapt to the incoming water temperature.
- No action is required if the product is left unused for less than 2 days.
- If the product is not used for more than 2 days, please turn off the power and empty the water tank. Before the next use, refill the water tank and flush the internal water pipeline to ensure proper operation.
- Water of 25°C is the same as the temperature of water in the tank. Its temperature may rise or fall depending on the tank water temperature.

First Time Use Instructions

Before first use, please flush the internal water pipeline. When the product is powered on for the first time, let it dispense water at high flow to clean the pipeline.

1. Unpack the product and install the drip tray properly. Remove the protective film on the drip tray.
2. Remove the water tank lid, fill the tank up to the maximum water level, then close the lid.
3. Connect the power supply. The product will enter standby mode.
4. Dispense one cup of 25°C water. Then select 95°C, 300ml to dispense another cup. This completes the initial setup.

How to use

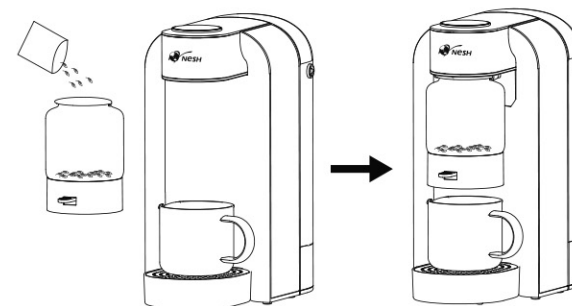
- Clean your hands. Remove the water tank lid, fill the tank up to the maximum water level, and close the lid properly.
- Make sure your hands are dry. Plug the power cord into the socket. The indicator light will turn on, and the product will enter standby mode.
- Set the desired water temperature and volume. After unlocking the Child Lock function, touch the Start Button to dispense water.
 - 95°C: Suitable for brewing Pu-erh tea
 - 85°C: Suitable for coffee and green tea
 - 75°C: Suitable for lemon water
 - 45°C: Suitable for milk powder
 - 25°C: Room temperature water
- If there is any residual water in the drip tray, discard it.
- When the  indicator light is on, the water level is low. Add water to the tank and the indicator will turn off automatically.

Note: After the low water warning is cleared, the first cup dispensed may contain some cold water before hot water starts.

Product Usage and Maintenance

Tea Making Instructions

- Turn on the product, first dispense a cup of 25°C water.
- Remove the tea brewer cup by gently pulling it outward from the product. Add your tea leaves, then reinsert the cup securely.
- Select your desired temperature and water volume, then start brewing.
- When the tea is ready to drink, press the "Tea Dispensing Button". The brewed tea will flow into the serving cup. Release the button to stop dispensing.



Notes



Precaution

The following situations are normal during use of this product. Please be rest assured.

- Pump sounds during heating are normal.
- When dry-boil occurs, a beeping alert will be triggered by the protection system.
- Heating may take longer when the water temperature is low.
- In high-altitude areas, the water temperature may be slightly lower.
- When using the high-temperature mode in high-altitude areas, steam may spray out along with the water. Please use with care to avoid scalding.

Troubleshooting

If you encounter any issues or malfunctions during use, please contact NESH CARE Team. To save your time, kindly refer to the following possible causes for a quick self-check before sending it in for service.

Conditions	Possible Causes	Solutions
The product is not working	The power plug is not properly connected	Plug in properly
	It is under Child Lock mode	Release Child Lock
Not dispensing water	It is under Child Lock mode	Release Child Lock
Water flow is too slow	Impurities block the water inlet	Check if the water inlet at the bottom of the tank is blocked
Hot water temperature is too low	System not yet adapted	Run two cups of 95°C water to help the product adapt. It will then work normally
When the product beeps	It is out of water	Check the water tank
	Heating element dry-boil	Dispense a few cups of 25°C water to cool the heating element
	Improper first use	For first-time use, dispense one cup of 25°C water before heating. Then select 95°C, 300ml to dispense another cup
Abnormal smell of water	Previously used to heat liquids with strong odours	Avoid placing the product in odour-heavy surroundings, and do not use water with any noticeable smell or poor quality
"E1 Indicator"	High temperature protection	Unplug the power cord and let the product cool down for 15 minutes
"E2 or E3 Indicator"	Malfunction	Contact NESH CARE Team for assistance

Should you need further assistance:



Scan the QR code for more guidance



Alternatively, contact our NESH CARE Team
03-8060 3668

Limited Warranty

1. NESH Marketing Sdn. Bhd. warrants that this NESH product and/or its genuine NESH part/accessory is free from defects in material and workmanship at the time of its original purchase by a consumer.
2. If during the warranty period, this product fails to operate under normal use and service due to defects in design, materials and workmanship, NESH authorised distributors or service partners will at their option, either repair or replace the product in accordance with the terms and conditions stipulated herein.
3. NESH and its service partners reserve the right to charge a handling fee if a returned product is found not to be under warranty according to the conditions below.

Terms & Conditions

1. This warranty is valid for the original proof of purchase issued to the original purchaser for this product by a NESH Authorised dealer. NESH reserves the right to refuse warranty service if this information has been removed or changed after the original purchase of the product from the dealer.
2. This warranty does not cover any failure of the product due to normal wear and tear, or due to misuse, including but not limited to use in other than the normal and customary manner, in accordance with the NESH instructions for use and maintenance of the product, nor does this warranty cover any failure of the product due to accident, hardware modification or adjustment, acts of God or damage resulting from shock and impact.
3. This warranty does not cover product failures caused by installations, modifications, repair or opening of the product performed by non-NESH Authorised personnel.
4. This warranty does not cover product failures which have been caused by use of accessories or other peripheral devices which are not NESH or NESH branded original accessories intended for use with the product.
5. There are no expressed warranties, whether in written or oral, other than this printed limited warranty.

**NESH MARKETING SDN BHD**

(199301002028)

12, Jalan Puteri 4/2, Bandar Puteri, 47100 Puchong, Selangor, Malaysia.

Tel: 03-8060 3668

E-mail: info@nesh.com.my Website: www.nesh.com.my

Facebook: NESH Malaysia Instagram: neshmalaysia

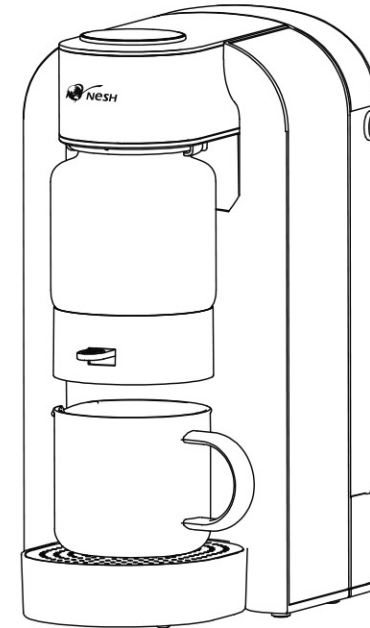


Instant Brewer

使用说明书

Model: EM3026

使用之前，请仔细阅读此使用说明书以完全了解正确的使用方法。
请保留此说明书以供日后参考。



目录

敬爱的 NESH 用户：

感谢您选择我们的产品。请在操作和使用之前仔细阅读这本手册，以安全有效地使用此产品。请把使用说明书妥善保存以供日后参考；如果要把本机送给他人，请附上说明书。愿您喜欢我们的产品。

产品简介

NESH Instant Brewer作为智能型饮水产品，即开即饮，杜绝“干滚水”，健康又安全；同时产品可以出不同温度的热水，满足多种饮品的最佳冲泡要求，提升生活品质。

特点

- **快速**：出热水只需要3~5秒，即开即饮，无须事先烧好保温。
- **节能**：仅在加热时工作，根据用水量智能加热，避免多煮少喝，节省能源，更加环保。
- **安全**：人体远离带电部件，保障操作安全。即开即饮，避免“再沸水”，更安全卫生。
- **智能控温**：可调整温度，满足不同水温的加热需求。
- **智能出水**：可根据需求控制出水量，满足不同用水习惯。

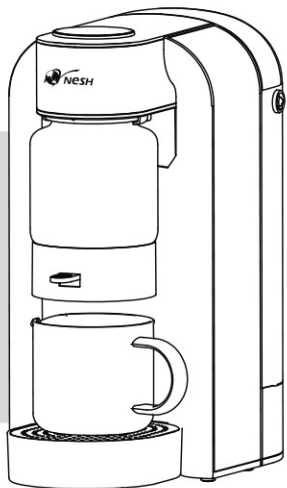
产品规格01
安全须知02
产品结构03
产品使用与维护03
故障处理07
保用声明08
条例08

特别声明

这份资料的所有内容都经过认真核对。如有印刷上、解读上的任何错误和遗漏，本公司将保留解释的权利。此外，任何技术改进将在修订本里通知。为了不断改进产品，我们保留对其做技术、程序以及外观改进的权利。

产品规格

型号	: EM3026
重量	: 2.5kg
额定电压	: 220V-240V~ ;50Hz/60Hz
额定功率	: 2000W-2400W
水箱容量	: 2 Litres
产品尺寸	: 284 x 162 x 320mm

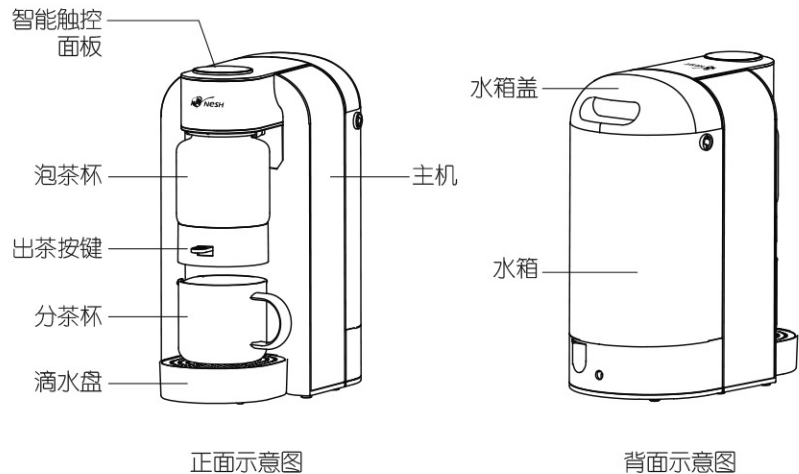


安全须知

为保障您的安全，请遵循本手册中的安全提示，以降低发生意外的风险。在未阅读和理解本手册之前，请勿操作本产品，否则可能导致事故或产品故障。

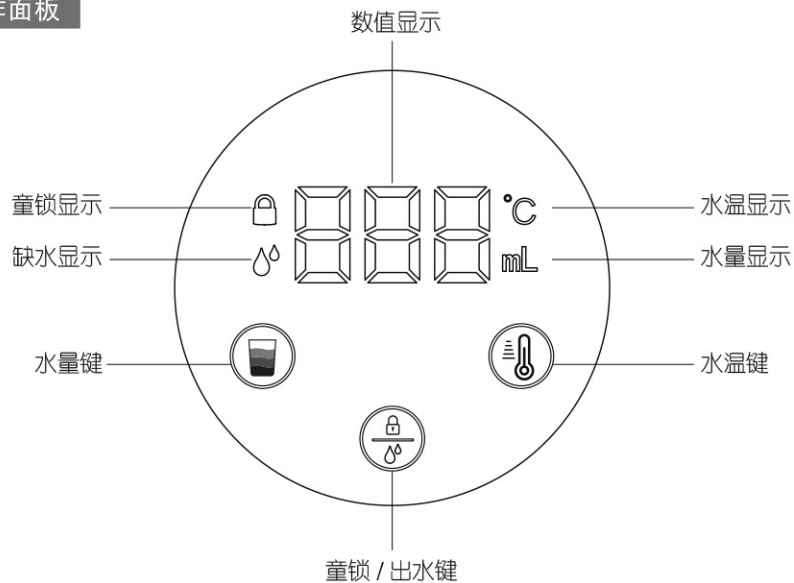
- 请确保电源插头必须正确接地，且额定电流大于10A。如果在使用过程中感到机身有麻电感或轻微触电，请立即关闭电源，并联系合格电工检查插头是否接地良好。
- 本产品不适合安装在户外或可能有水花飞溅的环境中使用，必须安装在室内阴凉干燥处，避免阳光直射。另外，请勿在机器周围放置易燃物品。
- 请勿在产品底下垫泡棉、纸皮或其他杂物，以免积水或漏电。
- 在搬运、安装或使用过程中，请勿跌落、碰撞或挤压本产品，以免造成损坏。
- 请握住插头拔下电源线，切勿直接拉扯电源线。请勿随意延长电源线，以免引发火灾或触电风险。
- 本产品严禁无水干烧。
- 移动本产品时，请勿拉扯电源线，使用时请勿将电源线缠绕在本产品上。
- 请勿将本产品放在高温台面上，也不可在高温环境下使用。
- 使用中，请勿触摸出水口以免烫伤。
- 请勿将插头或电源线浸入水中或其他液体中。
- 使用本产品前，请确认插座电力负载足够，以避免线路过载；并检查所使用的电压和功率是否与产品规格标示一致。
- 产品通电时请勿取下水箱。
- 取下泡茶杯后，请及时调整水杯的高度，防止热水溅出，造成烫伤。
- 请将本产品放置在儿童不易接触的稳固桌面上，请勿将其放在任何电器设备上方。
- 产品未使用或清洁前，请拔掉电源插头。
- 若长时间不使用本产品，请拔掉电源并倒掉水箱中的水。
- 若本产品发生漏水或漏电，请立即关闭电源并拔掉插头，联系NESH CARE客服团队交由专业维修人员处理，切勿自行维修。
- 只使用厂家部件更换。
- 清洁本产品时，请使用柔软的棉布蘸取适量清水擦拭。请勿使用汽油等有机溶剂擦拭机身，以免造成机面褪色。严禁用水冲洗机身或喷淋清洁本产品。

产品结构



产品使用与维护

操作面板



产品使用与维护

按键操控



童锁键

- 轻触童锁按键，童锁指示灯灭。
- 产品处于童锁状态时，产品不可出水，但可进行水温、水量调节。
- 产品停止工作，10秒后自动上锁，童锁灯亮。



水温键

- 轻触水温键，可选择所需温度档位，屏幕将显示对应温度。
- 本产品共有5档水温可以调节，分别为 25°C, 45°C, 75°C, 85°C, 95°C



水量键

- 轻触水量键，可选择所需水量档位，屏幕将显示对应水量。
- 本产品共有3档水量可以调节，分别为：150ml, 230ml, 300ml。



出水键

- 因出水键与童锁键为同一按键，在产品处于童锁状态时，需先解除童锁后再轻触按键才可出水。
- 在出水过程中，可随时轻触任意键停止出水。

使用注意事项



警告

- 只能对本产品水箱中的水进行加热，水箱中的水应为常温水，过高或过低的水温容易造成产品故障。
- 本产品不得使用除正常饮用水以外的其它液体。
- 本产品使用的电源插头必须正确接地，且插座电流必须大于等于10A，否则可能导致电源线过热，产生火灾等危险。
- 儿童、行动不便人士必须在专业人士指导下才能使用本产品。
- 一旦发生火灾事故，请立即切断本产品电源，并采取适当的灭火措施。
- 清洗时，请勿将本产品浸入水中。

产品使用与维护



指示

- 滴水盘上的薄膜用于保护产品外观，使用前请撕除。
- 本产品在第一次使用时，请先制一杯25℃水，以便本产品适应进水温度。
- 本产品短期停用（不超过两天）可以不做处理。
- 本产品长期停用（两天以上），请关闭电源并倒掉水箱中的水。下次使用前，往水箱加水后，先进行管路清洗方可正常使用。
- 本产品所出的常温水与水箱中的水温一致。当水箱中的水温升高或降低时，常温水的出水温度也会随之变化。

第一次使用注意事项

第一次使用前请先清洗本产品水路，即首次通电使用时，让产品以大流量出水方式清洗水路。

1. 打开包装取出产品，正确安装好滴水盘，并将滴水盘面的保护膜撕掉。
2. 取下水箱盖，往水箱中加水至最高水位，盖好水箱盖。
3. 插上电源，本产品进入待机状态。
4. 先取一杯25℃的水后，再选择 95℃、300ml 烧制一杯，以完成程序调整。

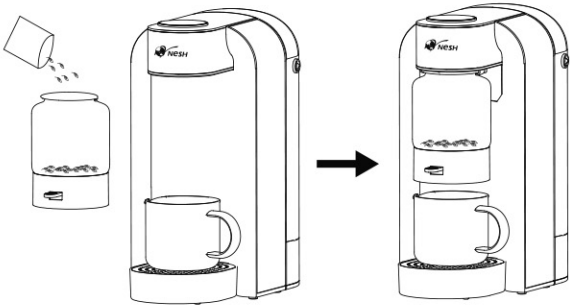
使用方法

- 清洁双手，取下水箱盖，往水箱中加水至最高水位，装好水箱盖。
- 确保手部干燥，将插头插入电源插座，指示灯将亮起，产品处于待机状态。
- 将水温设置为所需温度，并设置好水量。解除童锁后，轻触出水键即可开始出水。
95℃: 适合泡普洱茶等
85℃: 适合冲咖啡、泡绿茶等
75℃: 适合冲柠檬水
45℃: 适合泡奶
25℃: 常温水
- 当滴水盘有残留水时，可取出滴水盘，将水倒出。
- 当 Δ 指示灯亮起时，表示产品处于缺水状态。往水箱加水后，指示灯将自动熄灭。
提示：缺水警报解除后首次出水，可能会先流出部分冷水，之后才开始加热出水。

产品使用与维护

冲泡茶饮使用说明

1. 产品通电后，请先接一杯常温水。
2. 然后将泡茶杯取下（往外抽即可取下泡茶杯），放入茶叶后，再将泡茶杯重新装回主机。
3. 选择所需的温度和水量，开始泡茶。
4. 当准备饮用时，按下“出茶按键”，茶水会从泡茶杯流入分茶杯。不需要出茶水时，松开按键即可停止。



注意事项



注意

- 本产品在使用过程中出现下列情况属于正常现象,请放心使用。
- 加热过程中出现水泵运作的声音属于正常现象。
 - 当无水干烧发生时，防干烧装置系统会自动提醒，发出提示音。
 - 当水温较低时，制热速度会相对慢一点，属于正常现象。
 - 在海拔较高的地区，出水温度可能会略低，属于正常现象。
 - 在高海拔地区使用高温模式制水时，可能会有蒸汽随水喷出，属正常现象，请注意防烫。

故障处理

使用过程中如有疑问故障，请联系NESH CARE客服团队。为节省您的时间，请在送检前参考以下自查项目。

故障现象	可能原因	解决方法
产品不工作	电源插头没插好	插好电源
	产品处于童锁状态	解除童锁
产品不制水	产品处于童锁状态	解除童锁
出水流速过慢	杂质堵住进水口	检查水箱底部进水口是否堵住
热水水温过低	产品内部电脑程序未适应	连续制95℃热水2杯，使产品适应当前环境，适应后可正常使用
产品发出提示声	产品缺水	检查水箱中的水是否已用完
	加热体干烧	出几杯25℃水冷却加热体
	初次使用不当	初次使用先制一杯25℃常温水，再选择 95℃、300ml 烧制一杯
出水味道异常	产品使用过有气味的液体制热	不可在气味过重的环境中使用，并且不可使用水质很差或有气味的水
“E1”故障警报	产品高温保护	拔掉电源插头，让产品冷却15分钟
“E2或E3”故障警报	产品故障	联系NESH CARE客服团队

如果您需要进一步的帮助：



请扫描以上二维码
查看更多资讯



欢迎联系我们的
NESH CARE 客服团队
03-8060 3668

保用声明

1. NESH Marketing Sdn. Bhd. 保证顾客所购买的产品/配件/零件品质皆完好无缺。
2. 如本产品于保用期内因品质问题而无法操作，NESH授权经销商或服务伙伴将根据以下条例，选择维修或更换产品。
3. 如产品不符合以下条例，NESH授权经销商或服务伙伴将有权征收服务费。

条例

1. 此产品保证是由NESH授权经销商提供并有效于原购者。NESH有权保留 / 拒绝提供保用服务，如购买者无法出示购买证明。
2. 根据NESH产品的说明书，此保用并不包括人为，误用，意外，修改，天灾等所造成的损坏。
3. 此项保用并不包括非授权人士因安装，修改，维修或处理产品时所造成之损坏。
4. 此项保用并不包括因使用非NESH品牌配件或零件所造成的损坏。
5. 除有效保证印本，其他货品质量保证，无论书写或口述皆无效。